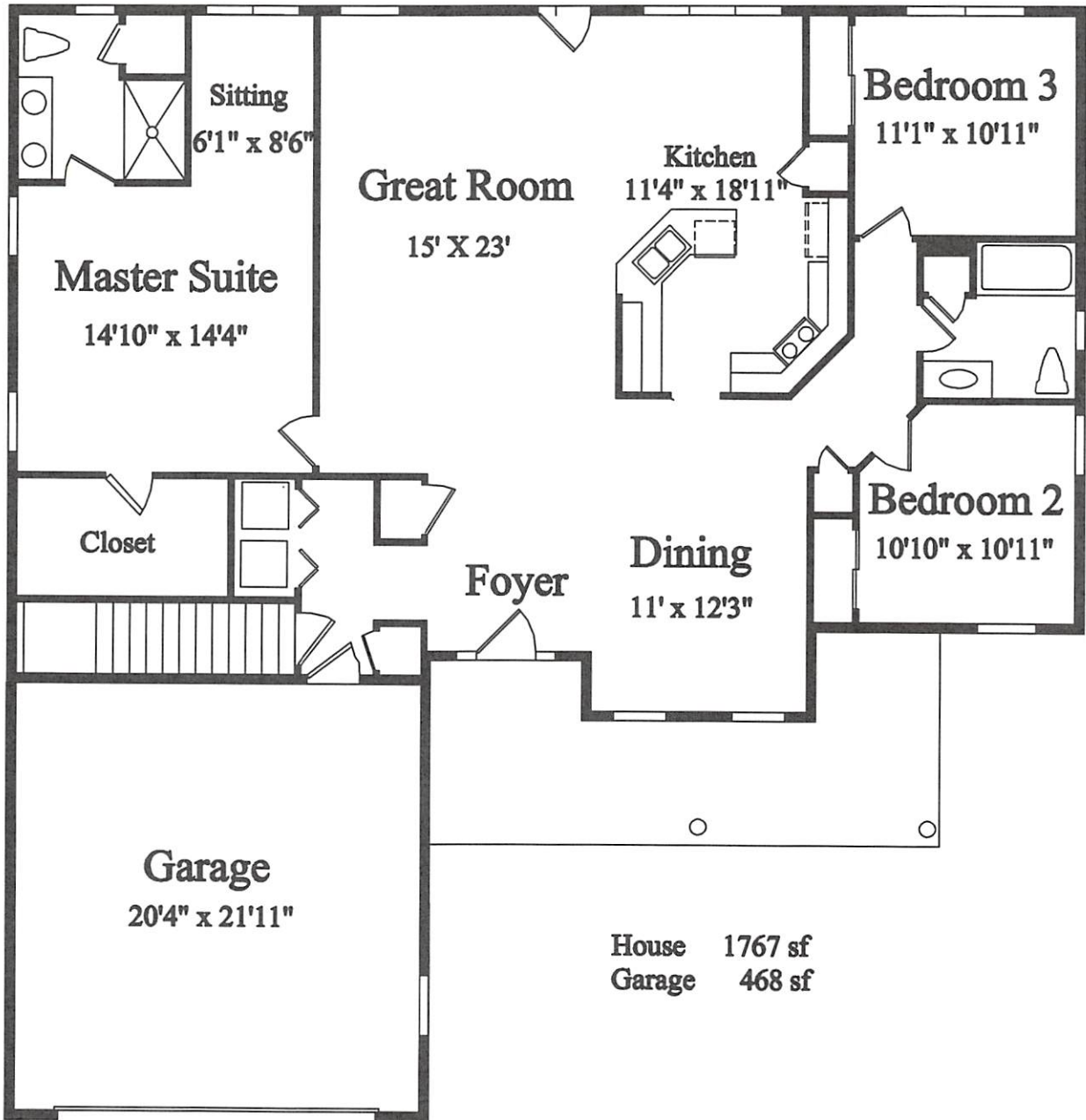


# KINCAID



House 1767 sf  
Garage 468 sf

**COPYRIGHT © 2002 BY FRANK BETZ ASSOCIATES, INC.**  
FRANK BETZ ASSOCIATES, INC. ASSUMES NO LIABILITY  
FOR ANY CHANGES OR MODIFICATIONS MADE TO THESE  
PLANS BY OTHERS.

TIME: 3:24 PM DATE: 4-6-2004 PATH/ NAME: / BOOK 16/ CHRISTAL /B1692A04.DCS

*Waterford Development policy of continual improvement in design and construction requires that dimensions are approximations and subject to change. Specifications, equipment and prices may be subject to change by the developer without notice. Renderings are artist conception only. Some optional features may be shown.*

*Condominium Units 1-75 have been registered with the New Hampshire Consumer Protection and Antitrust Bureau of the Attorney General's Office, Department of Justice and binding Purchase and Sales Agreements can be accepted.*

